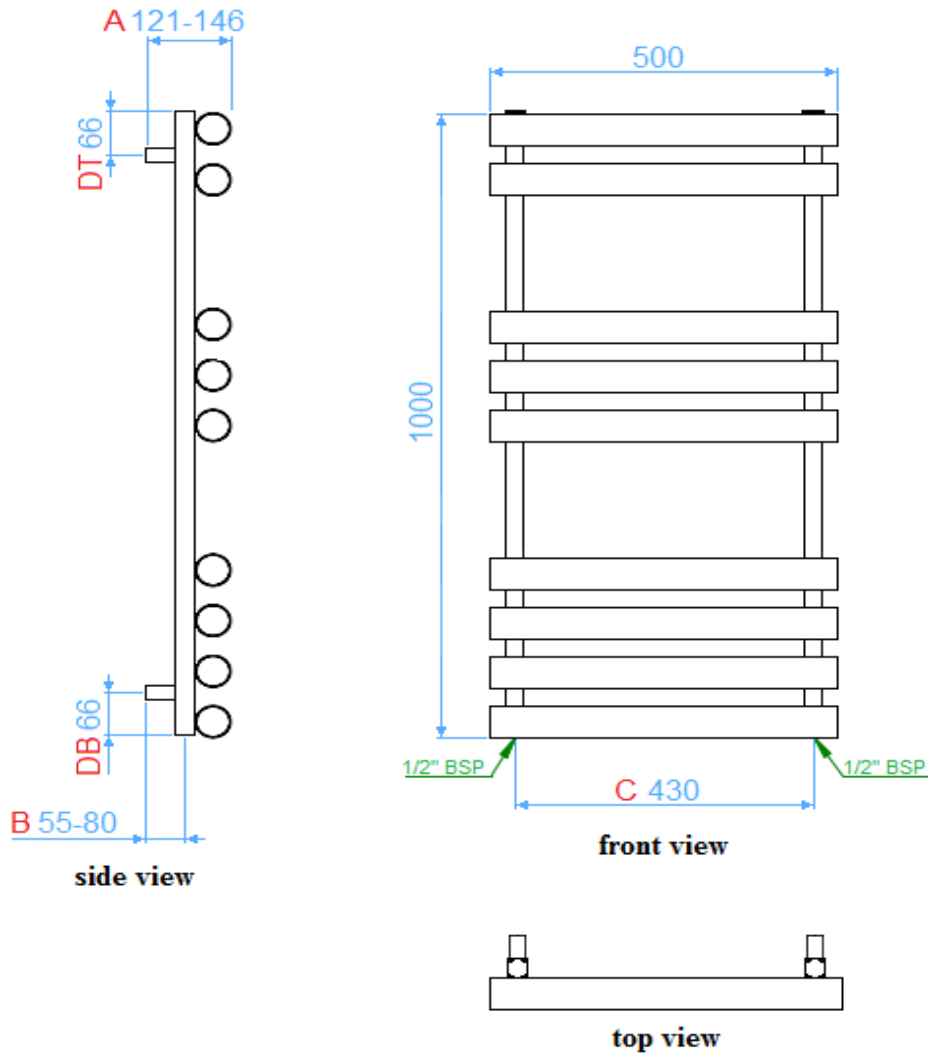


APOLLO garda plus technical specification



GARDA PLUS DIMENSIONS (mm)			
MODEL HEIGHT			1000
Width of radiator			500
Upright tube dimensions			30 x 30
Cross tube diameter			51
Back wall to front of rad		(A)	121 - 146
Wall to pipe centres	Side entry	(B)	55 - 80
	Bottom entry	(C)	430
Tapping centres	Side entry		N/A
	Bottom entry	(C)	430
Bracket positions	Top	(DT)	66
	Bottom	(DB)	66
Tappings			1/2"

GARDA PLUS WEIGHTS AND VOLUMES (per radiator)		
Model Width (mm)		500
Dry Weight (A) Kg		10.85
Water content (B) Litres		9.79
Working Weight (A+B) Kg		20.64
Outputs: Watts $\Delta T=50k$		370

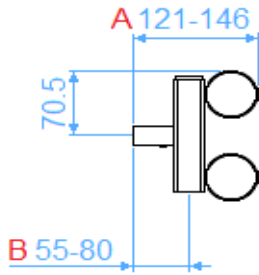
The thermal outputs expressed at $\Delta T=50k$ comply with European regulation EN 442-1

ADDITIONAL INFORMATION		
Material		304 grade stainless steel
Steel thickness	Upright	1.2mm
	Cross tubes	1.2mm
Maximum working pressure		6 bar
Testing pressure		7.8 bar
Maximum working temperature		90°C

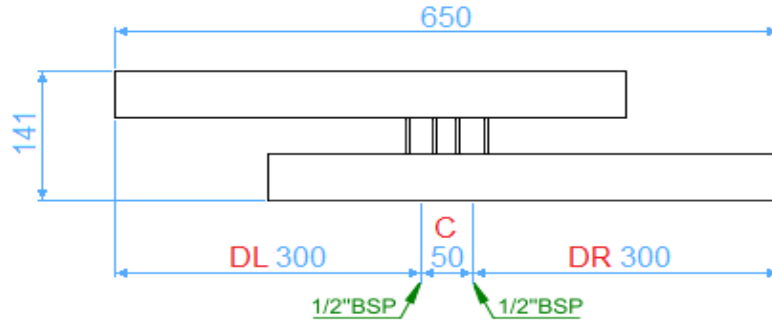
TEMPERATURE FACTORS FOR DIFFERENCES BETWEEN MEAN WATER TEMPERATURE AND ROOM TEMPERATURE IN °C AND °F OTHER THAN 50°C (90°F)			
5°C	0.050	10°F	0.057
10°C	0.123	20°F	0.142
15°C	0.209	30°F	0.240
20°C	0.304	40°F	0.348
25°C	0.406	50°F	0.466
30°C	0.515	60°F	0.590
35°C	0.629	70°F	0.721
40°C	0.748	80°F	0.858
45°C	0.872	90°F	1.000
50°C	1.000	100°F	1.147
55°C	1.132	110°F	1.298
60°C	1.267	120°F	1.454
65°C	1.406	130°F	1.613
70°C	1.549	140°F	1.776
75°C	1.694		

TO APPLY THE FACTORS SHOWN IN THE TABLE TO OUR QUOTED OUTPUTS MULTIPLY THE QUOTED OUTPUT BY THE CHOSEN OPERATING FACTOR TO GIVE THE OUTPUT

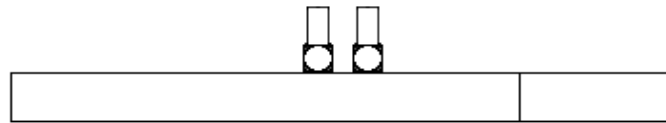
APOLLO **garda hi level** technical specification



side view



front view



top view

GARDA HI LEVEL DIMENSIONS (mm)			
MODEL HEIGHT			141
Width of radiator			650
Upright tube dimensions			30 x 30
Cross tube diameter			51
Back wall to front of rad		(A)	121 - 146
Wall to pipe centres	Side entry		
	Bottom entry	(B)	55 - 80
Tapping centres	Side entry		N/A
	Bottom entry	(C)	50
Bracket positions	Left	(DL)	300
Top to bottom - central to rail: 70.5	Right	(DR)	300
Tappings			1/2"

GARDA HI LEVEL WEIGHTS AND VOLUMES (per radiator)	
Model Width (mm)	650
Dry Weight (A) Kg	3.08
Water content (B) Litres	0
Working Weight (A+B) Kg	0
Outputs: Watts $\Delta T=50k$	256

The thermal outputs expressed at $\Delta T=50k$ comply with European regulation EN 442-1

ADDITIONAL INFORMATION		
Material		304 grade stainless steel
Steel thickness	Upright	1.2mm
	Cross tubes	1.5mm
Maximum working pressure		6 bar
Testing pressure		7.8 bar
Maximum working temperature		90°C

TEMPERATURE FACTORS FOR DIFFERENCES BETWEEN MEAN WATER TEMPERATURE AND ROOM TEMPERATURE IN °C AND °F OTHER THAN 50°C (90°F)			
5°C	0.050		
10°C	0.123	10°F	0.057
15°C	0.209	20°F	0.142
20°C	0.304	30°F	0.240
25°C	0.406	40°F	0.348
30°C	0.515	50°F	0.466
35°C	0.629	60°F	0.590
40°C	0.748	70°F	0.721
45°C	0.872	80°F	0.858
50°C	1.000	90°F	1.000
55°C	1.132	100°F	1.147
60°C	1.267	110°F	1.298
65°C	1.406	120°F	1.454
70°C	1.549	130°F	1.613
75°C	1.694	140°F	1.776

TO APPLY THE FACTORS SHOWN IN THE TABLE TO OUR QUOTED OUTPUTS MULTIPLY THE QUOTED OUTPUT BY THE CHOSEN OPERATING FACTOR TO GIVE THE OUTPUT